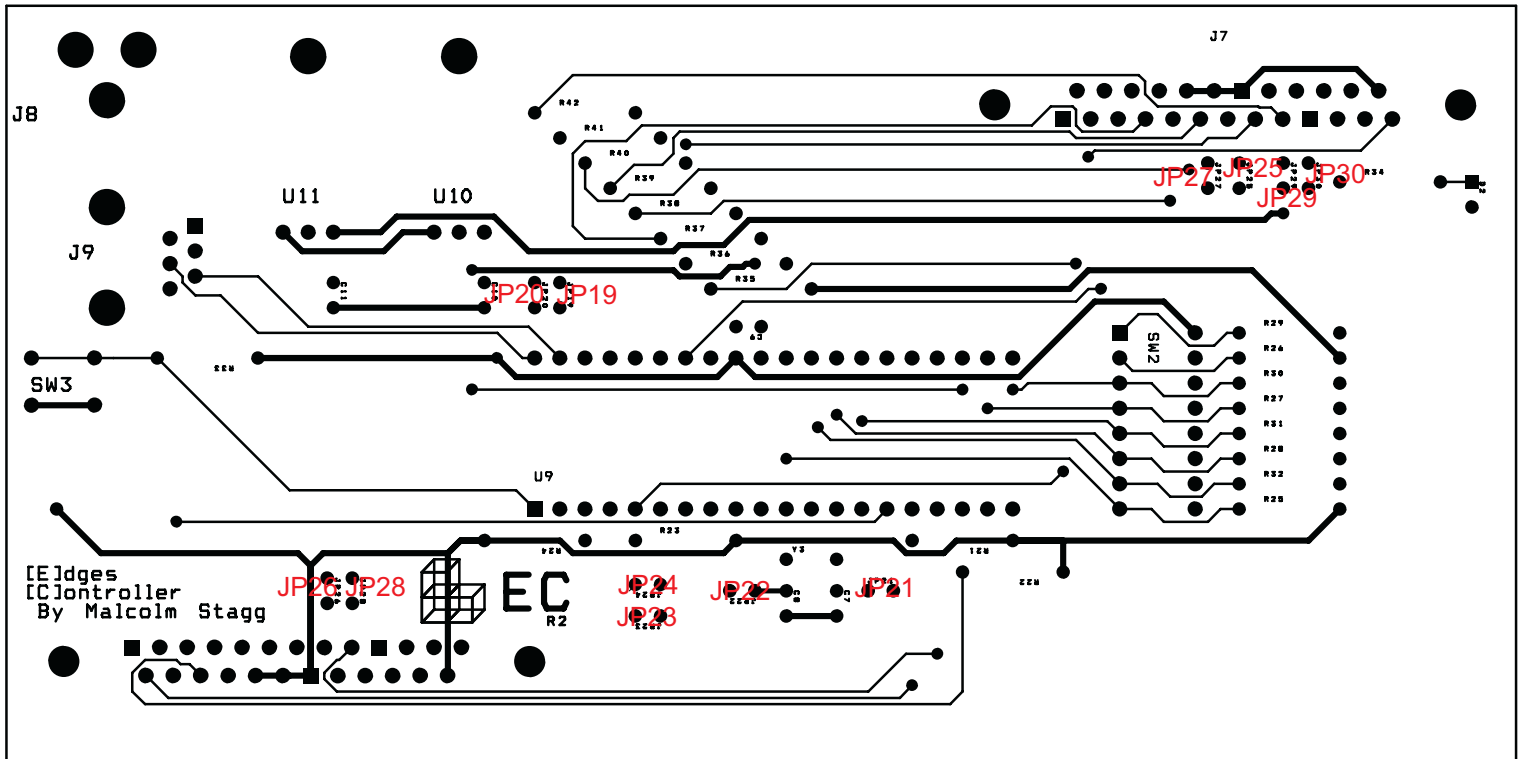


Jumper Settings for Edges Controller [EC]

Malcolm Stagg



JP19 & JP20

- On - Use Microcontroller Normally
- Off - Use Debugger

JP21 & JP22

- On - Use On-Board Crystal
- Off - Use External Crystal

JP25 & JP27

- On - Propagate Crystal Signal Backward to Other Boards
- Off - Only Use with Current Board

JP23 & JP24

- On - Propagate Crystal Signal Forward to Other Boards
- Off - Only Use with Current Board

JP29

- On - Propagate 12V Power Backward to Other Boards
- Off - Only Use with Current Board

JP26

- On - Propagate 12V Power Forward to Other Boards
- Off - Only Use with Current Board

JP30

- On - Propagate 5V Power Backward to Other Boards
- Off - Only Use with Current Board

JP28

- On - Propagate 5V Power Forward to Other Boards
- Off - Only Use with Current Board