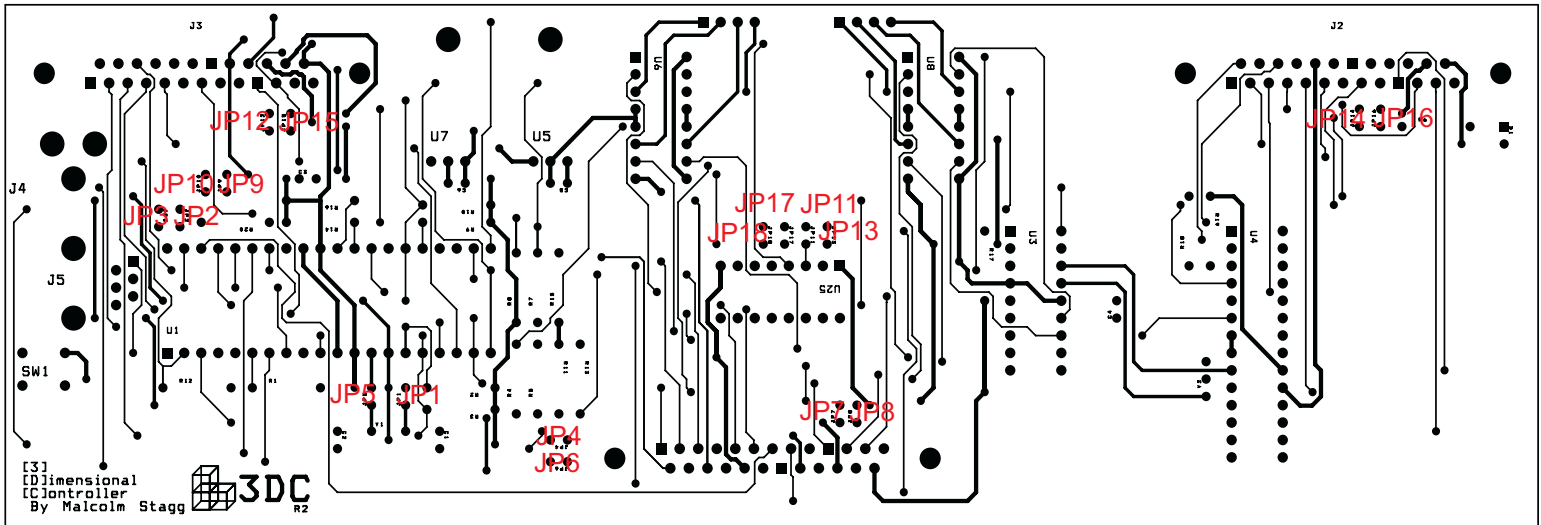


Jumper Settings for 3 Dimensional Controller [3DC]

Malcolm Stagg



JP2 & JP3

- On - Use Microcontroller Normally
- Off - Use Debugger

JP1 & JP5

- On - Use On-Board Crystal
- Off - Use External Crystal

JP9 & JP10

- On - Propagate Crystal Signal Backward to Other Boards
- Off - Only Use with Current Board

JP4 & JP6

- On - Propagate Crystal Signal Forward to Other Boards
- Off - Only Use with Current Board

JP12

- On - Propagate 12V Power Backward to Left Boards
- Off - Only Use with Current Board

JP14

- On - Propagate 12V Power Backward to Right Boards
- Off - Only Use with Current Board

JP7

- On - Propagate 12V Power Forward to Other Boards
- Off - Only Use with Current Board

JP15

- On - Propagate 5V Power Backward to Left Boards
- Off - Only Use with Current Board

JP16

- On - Propagate 5V Power Backward to Right Boards
- Off - Only Use with Current Board

JP8

- On - Propagate 5V Power Forward to Other Boards
- Off - Only Use with Current Board

NORMAL IMAGES (Left Port: Left Image, Right Port: Right Image)

- JP11 - Off, JP13 - On, JP17 - Off, JP18 - On

REVERSE IMAGES (Left Port: Right Image, Right Port: Left Image)

- JP11 - On, JP13 - Off, JP17 - On, JP18 - Off